

Canon

imageFORCE

710F/710FZ

610F/610FZ

520F/520FZ

THE POWER OF NEXT



- Compact Monochrome Multifunction Printer
- Prints up to 75 ppm (BW, Letter)
- Scans up to 200 ipm (300 dpi BW/Colour Duplex)
- Up to 3,200 Sheet Maximum Paper Capacity
- Supports Paper Sizes up to 8-1/2" x 14" (Legal Size)

imageFORCE 710F

THE POWER OF NEXT

To push the boundaries of what's possible, you must be bold. The **Power of Next** represents Canon's latest phase of ambitious and advanced print innovation with the extensive line-up of imageFORCE technology. This highly productive lineup is designed to help you **print better**, **do more**, and **stay ahead** in today's digital workplace. Backed by a strong commitment to the *Kyosei* philosophy—which promotes living and working together for the common good—Canon ushers in a new era of print.

imageFORCE 710 SERIES

Canon's imageFORCE 710 Series is designed to deliver high-speed, high-quality black-and-white printing in a compact multifunction design, great for organizations that need reliable performance in space-conscious environments. Built on Canon's imageFORCE platform, these models deliver powerful functionality with a compact design, suited for busy teams and offices where space is limited.

Performance for Any Pace



75 ppm

Designed for high-volume environments requiring fast speeds and efficiency, whether in compact offices or larger departments.



65 ppm

Ideal for teams needing fast, reliable performance with flexible setup to suit, virtually any workspace.



55 ppm

Great for smaller workspaces that need reliable printing and scanning, with desktop or standing options.



PRINT BETTER

Designed to deliver, high-quality black-and-white prints with speed, accuracy, and the dependable performance from Canon you have come to expect.

BRILLIANT QUALITY AND RELIABILITY



Proven Canon Reliability

Engineered with Canon's renowned technology to provide consistent performance, help reduce downtime, and ease the burden on IT support.



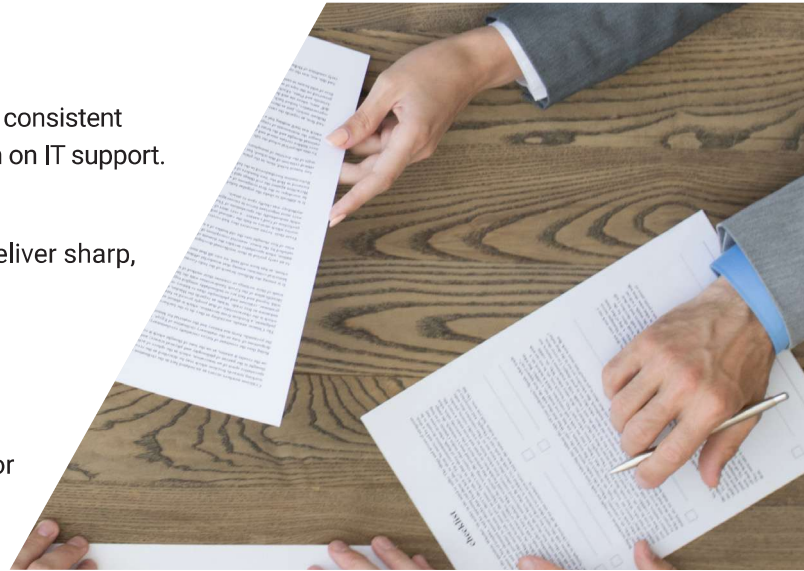
Outstanding Image Quality

Advanced imaging technology and toner formulation deliver sharp, high-quality black-and-white output.



Maximized Uptime

Designed to help maximize and support continuous productivity with real-time status alerts, easy supply replenishment, and step-by-step maintenance videos for quick consumables replacement.



HIGH-SPEED PRECISION WITH STUNNING CLARITY

To help achieve outstanding image quality of up to 1200 dpi (equivalent) at high engine speeds, the system increases laser exposure frequency—so that your prints can be sharp, detailed, and consistent.

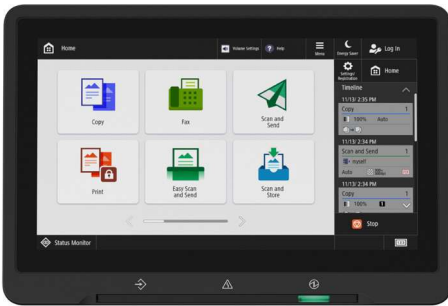
HELP EXPAND PRINT EFFICIENCY WITH WORKFLOW SOLUTIONS

Manage tasks, track costs, and print and scan all on one platform with the optional uniFLOW Online solution, a powerful cloud-based solution that helps to reduce IT workload and adds flexibility to your print environment.

DO MORE

INTUITIVE WORKFLOWS FOR EVERYDAY USE

Help elevate daily efficiency with seamless workflows, simple and intuitive print technology, integrated solutions, and flexible media handling.



SIMPLE USER INTERFACE

Each model within the imageFORCE line-up supports a consistent user interface, enabling operators to effortlessly run the device with a minimal learning curve.

- Large 10.1" responsive and intuitive touchscreen.
- Familiar interface with icons categorized by colour.
- Easy customization settings for language, accessibility, and display preferences.

WORKFLOW EFFICIENCY

- Supports mobile solutions and integration with various cloud services like Google Drive.
- Scan and convert documents to searchable digital files in a variety of file formats.
- Integration with Canon and select third-party software with embedded application platform.
- Easily scan to, and print from, various cloud services or email directly from the device User Interface.¹



CLOUD READY SOLUTIONS

Canon's imageFORCE systems have the ability to integrate seamlessly with a range of powerful Canon and third-party software to help your workflow evolve. For example, you can easily print and scan to—and from—your favorite cloud storage services with the optional Cloud Connector.¹

GAIN CONTROL OF YOUR FLEET

Centralize the management of your print fleet and help maximize uptime with the support of imageWARE Enterprise Management Console. A standard feature on Canon devices, this console helps to monitor device status and consumables, apply security settings, update firmware, capture meter readings, and much more—virtually anytime and anywhere.

HASSLE-FREE SETUP AND MAINTENANCE

Canon Canada's range of Smart Services are available as an option and are designed to help support you at every stage of the device management life cycle. Benefits include:

- Setting up and deploying your devices quickly.
- Enabling proactive service and fast issue resolution.
- Access upgrades and replace parts with ease.

PRINTING THAT PERFORMS. SCANNING THAT DELIVERS.

Performance doesn't stop at print. The imageFORCE 710 Series delivers scan speeds of up to 200 images per minute with single-pass duplex scanning for fast, efficient digitization. Whether you're capturing reports, ID cards, or full-colour documents, the device is designed to produce clean, high-resolution scans that integrate seamlessly into your digital workflows.

STAY AHEAD

FUTURE-READY. SECURITY-FOCUSED. LOW-IMPACT DESIGN.

Make the move forward with cutting-edge print technology that is built to help your organization be more productive, and more prepared for the unexpected.

SECURITY FEATURES DESIGNED TO HELP SAFEGUARD YOUR INFRASTRUCTURE

Implement security features security features designed with the modern workplace in mind. These include:



Security Environment Estimation Feature:

Recommends security settings based on the device's operating environment.



Verify System at Startup²: At device start-up,

helps to verify that the boot process, firmware, and applications have not been altered or tampered with. Includes automatic recovery of boot process.



FIPS 140-3 Storage Encryption:

A government standard for cryptographic modules, supporting data encryption and security in hardware and software systems.



SIEM Integration³: The ability to integrate your

print your print devices into your compatible security and event monitoring strategy.



Trellix™ Embedded Control²:

Utilizes whitelisting to help prevent execution of unrecognized malware or tampering of existing firmware/applications.



Control Access: Provides flexible authentication

methods for PIN, username/password, or badge authentication accessibility, and display preferences.



CANON'S FUTURE-READY UNIFIED FIRMWARE PLATFORM

With Canon's Unified Firmware Platform (UFP), a common source code for firmware development embedded within the imageFORCE products, your device can benefit from regular updates—which may include additional functionality to existing models—and the latest features.



BUILT WITH A SUSTAINABILITY FEATURES

From product design to power use, Canon's commitment to the environment can be seen with the imageFORCE series of printers. Features include:

Low Energy Consumption: A combination of highly efficient fusing technologies and low-melting-point toner helps to minimize power requirements and achieve low energy consumption.

Cardboard Packaging: Canon has reduced its use of plastic materials by switching from conventional foam packaging to interior cardboard packaging materials for the main unit—a material that is widely recyclable.

Prestigious Certifications: ENERGY STAR® certified

CONFIGURATION OPTIONS

imageFORCE 710F/710FZ 610F/610FZ 520F/520FZ

imageFORCE 710F*
(Non-Finisher Model)



imageFORCE 710FZ
(Finisher Model)



CASSETTE FEEDING UNIT-AR1

- 550-sheet capacity and cabinet for storage
- Supports Paper Sizes up to 8-1/2" x 14" (Legal Size)
- Supports 16 to 36 lb. Bond



CASSETTE FEEDING UNIT-AX1

- 1,650-sheet capacity
- Supports Paper Sizes up to 8-1/2" x 14" (Legal Size)
- Supports 16 to 36 lb. Bond



ENVELOPE CASSETTE-A1^

- 75-sheet (Envelope)
- Supports COM10 (No.10), Monarch, DL, ISO-C5
- Supports 21 to 27 lb. Bond



HIGH CAPACITY CASSETTE FEEDING UNIT-D1

- 2,650-sheet capacity (550-sheet upper cassette, 2,100-sheet lower cassette)
- Supports Paper Sizes up to 8-1/2" x 14" (Legal Size)
- Supports 16 to 36 lb. Bond



CASSETTE MODULE-AG1**

- 550-sheet capacity
- Paper Sizes up to 8-1/2" x 14" (Legal Size)
- Supports 16 to 36 lb. Bond



CABINET TYPE-U^^

- Provides base (with wheels) for cassettes

* Finisher cannot be added after purchase.

** Only one module can be installed for F model configurations. Not compatible with FZ models or with Cassette Feeding Unit-AR1, Cassette Feeding Unit-AX1, High Capacity Cassette Feeding Unit-D1, or Envelope Module-A1. Contact your Authorized Canon dealer for other configuration options.

^ Only one module can be installed for F model configurations. Not compatible with FZ models or with Cassette Feeding Unit-AR1, Cassette Feeding Unit-AX1, High Capacity Cassette Feeding Unit-D1, or Cassette Module AG1. Contact your Authorized Canon dealer for other configuration options.

^^ Cabinet Type-U is required/strongly suggested for most floor standing configurations.

PRINTER SPECIFICATIONS

imageFORCE

710F/710FZ

610F/610FZ

520F/520FZ

Technology/Type	Laser/A4 Monochrome Multifunctional
Core Functions	Print, Copy, Scan, Send, Store and Fax
Print/Copy Speed (BW)	imageFORCE 710F/710FZ Up to 75 ppm (Letter) Up to 59 ppm (Legal) imageFORCE 610F/610FZ Up to 65 ppm (Letter) Up to 51 ppm (Legal) imageFORCE 520F/520FZ Up to 55 ppm (Letter) Up to 45 ppm (Legal)
Scan Speed (Letter)	Send (300 x 300 dpi): Automatic Colour Select "OFF" Single-Sided Scanning: 100 ipm Double-Sided Scanning: 200 ipm Automatic Colour Select "ON" Single-Sided Scanning: 50 ipm Double-Sided Scanning: 100 ipm Copy (600 x 600 dpi): Single-Sided Scanning: 100 ipm Double-Sided Scanning: 155 ipm
Memory	4.5 GB RAM
Solid-State Drive	Standard: 256 GB
Warm-up Time	Quick Startup Mode: Approx. 4 Seconds ⁴ From Power On: Approx. 10 Seconds ⁵ From Sleep Mode: Approx. 10 Seconds
Paper Capacity (Letter, 20 lb. Bond)	Standard: 650 Sheets Maximum: 3,200 Sheets
Supported Media Types	Multi-Purpose Tray: Thin, Plain, Recycled, Colour, Heavy, Bond, Transparency, Letterhead, Envelope Paper Cassette: Thin, Plain, Recycled, Colour, Heavy, Bond, Label, Pre-Punched, Letterhead
Supported Media Sizes	Multi-Purpose Tray: Legal, Letter, Executive, Statement Custom Size (3" x 5" to 8-1/2" x 14") Envelopes [COM10 (No.10), Monarch, DL, ISO-C5] Paper Cassette: Letter, Executive, Statement Custom size (3-7/8" x 5-7/8" to 8-1/2" x 11-3/4")
Supported Media Weights	Multi-Purpose Tray: 16 lb. bond to 74 lb. cover (60 to 200 gsm) Paper Cassette: 16 to 36 lb. bond (60 to 135 gsm) Duplexing: 16 to 32 lb. bond (60 to 120 gsm)
Dimensions (W x D x H)	Non-Finisher Model: 19-3/4" x 23-1/2" x 24-1/4" (500 x 598 x 617 mm) Finisher Model: 19-3/4" x 23-1/2" x 32-1/8" (502 x 598 x 814 mm)
Weight	Non-Finisher Model: Approx. 81.6 lb. (37 kg) ⁶ Finisher Model: Approx. 101.4 lb. (46 kg) ⁶
Environmental Standard	ENERGY STAR [®] certified

¹ Requires one Cloud Connector term license per destination per device (each term license sold separately), Internet connection, email service account, PC or mobile device, an account with one of the compatible cloud services (if connecting to one of the available Cloud Connector cloud destinations), and a compatible Canon MFP.

² This feature is off by default and must be turned on by the administrator. Warm up times are affected once turned on.

³ Third-party SIEM system required. Subject to third-party SIEM system terms and conditions.

⁴ Canon cannot ensure compatibility with all third-party SIEM systems.

⁴ Time from device power on to when the copy icon appears and is enabled to operate on the touch panel display.

⁵ Time from device power on until copy ready (not print reservation).

⁶ Including regular toner.

WHAT WILL YOU CREATE WITH THE POWER OF NEXT?



Canon

Trellix

CANON
GENUINE
TONER, CARTRIDGE
& PARTS



[canon.ca](https://www.canon.ca)

As an ENERGY STAR® Partner, Canon Canada Inc. has certified this model as meeting the ENERGY STAR® energy efficiency criteria through an EPA recognized certification body. ENERGY STAR® and the ENERGY STAR® mark are registered Canadian marks. Canon, imageFORCE, imagePASS, and the GENUINE logo are registered trademarks or trademarks of Canon Inc. in Canada and may also be registered trademarks or trademarks in other countries. Canon products offer certain security features, yet many variables can impact the security of your devices and data. Canon does not warrant that use of its security features or recommendations will prevent security issues. Customers should perform their own due diligence and consult with their security expert to determine what security features to implement for their organization. Nothing herein should be construed as legal or regulatory advice concerning applicable laws; customers must have their own qualified counsel determine the feasibility of a solution as it relates to regulatory and statutory compliance. Some security features may impact functionality/performance; you may want to test these settings in your environment. Trellix and the Trellix logo are trademarks or registered trademarks of Musarubra US LLC or its subsidiaries in Canada and other countries. All other referenced product names and marks are trademarks of their respective owners. All printer output images are simulated. All features presented in this brochure may not apply to all Series and/or products and may be optional; please check with your Canon Authorized Representative for details. Products shown with optional accessories. Subscription to a third-party cloud service required. Subject to third-party cloud service providers terms and conditions. uniFLOW is a registered trademark of NT-ware Systemprogrammierung GmbH. Canon Canada does not provide legal counsel or regulatory compliance consultancy, including without limitation, Sarbanes-Oxley, HIPAA, GLBA, Check 21, or the USA Patriot Act. Each customer must have its own qualified counsel determine the advisability of a particular solution as it relates to regulatory and statutory compliance. Specifications and availability subject to change without notice. Not responsible for typographical errors.

©2025 Canon Canada Inc. All rights reserved.