

imageRUNNER ADVANCE C475iF III SERIES CHEAT SHEET

Key Focus Points

- High Value with Inclusive Standard Feature Set
- Cost Efficient Solution
- Consistency with Entire imageRUNNER ADVANCE Line
- Ease of Use and Personalization
- Support for Canon Solutions Portfolio
- Less Maintenance Design
- Compact Size

Standard

- Single Pass Duplexing
- Universal Login Manager (ULM)
- uniFLOW Online Express
- Wireless LAN Support
- Remote Operator's Kit
- Comprehensive Security Feature Set

Target Market

- Small to mid-size businesses that require fast and reliable A4 colour print, copy, and scanning
- Workgroups and departments within enterprise environments
- Enterprise environments looking for a consistent user experience across their fleet
- Environments with space requirements looking for desktop or floor-standing options

AVAILABLE MODELS

Print Speed (LTR, BW/Colour)
50 ppm

Desktop
Configuration



imageRUNNER
ADVANCE
C475iF III



imageRUNNER
ADVANCE
C475iFZ III

Floor-standing
Configuration*



imageRUNNER
ADVANCE
C475iF III



imageRUNNER
ADVANCE
C475iFZ III

*Floor-standing models shown with optional cassette feeding unit.

KEY SALES POINTS

Productive Scanning

- Single Pass Duplexing
- 100-sheet ADF capacity
- Scan Speeds up to 100 ipm
- Support for Job Build and Multi-sheet Feed Detection Features



Ease of Use

- Intuitive 10.1" control panel
- Consistent with entire Third Generation imageRUNNER ADVANCE product line
- Flick and pinch operability similar to smartphones



Paper Handling*

- Standard paper capacity: Up to 650 sheets
- Maximum paper capacity: Up to 2,300 sheets
- Flexible options to expand capacity for desktop and floorstanding configurations



Cassette Module-AS1



Cassette Feeding Unit-AT1



Cassette Feeding Unit-AJ1

*Optional Paper Handling Accessories

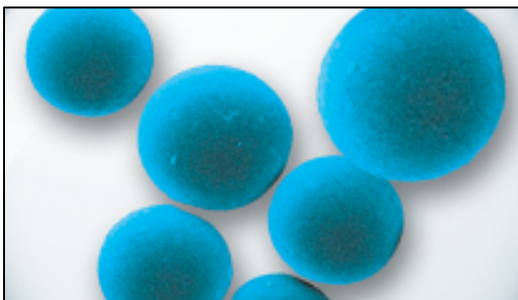
Productivity

- Print speeds of up to 50 ppm (LTR CLR/BW)
- Equipped with motion sensor designed to reduce the perceived waiting time for the device to recover from sleep mode
- Approx. 10 second warm-up time from device power on**

**Time from device power-on to when copy icon appears on the main menu of touch-panel.

Quality

- Utilizes S ("Spherical and Synergy Toner") toner, which utilizes particles that are uniform in shape and size, helping to create high-quality documents with clean lines.



Security Features

- Comprehensive standard security feature set, consistent with all Third Generation imageRUNNER ADVANCE 3rd Edition models
- Standard integration with SIEM (Security Information Event Management) systems and HDD security features (including Verify System at Startup, encryption, and overwriting)
- Wide variety of supported authentication features both as standard, such as uniFLOW Online Express, and optional solutions

Compact Design

